

SALES • RENTALS • SERVICE

★ REPAIRS ★

★ TRADE-INS ★

★ RECERTIFICATION ★

In This Issue...

Steel Shoring Systems

- Z-Lite • Light Duty Trench ShoringPg. 4
- Z-Box • Light Duty Trench ShoringPg. 5
- Light Weight SteelPg. 6
- Medium Duty Trench ShieldsPg. 8
- High Strength Trench ShieldsPg. 10
- Heavy Duty BoltedPg. 12
- Steel Manhole ShieldsPg. 14
- Rock BoxPg. 15



Training by the Best

Our goal at American Shoring Inc. is not only to be the best Trench Shoring Sales/Rental Company in the Industry, but to share our knowledge of the industry through safety awareness training. This training is designed for all persons associated with excavation safety and confined spaces.

At American Shoring Inc., we regard employee and customer safety a priority and offer Competent Person, Confined Space and OSHA 10 and OSHA 30 classes.

An effective safety program is the key to safety awareness which promotes not only safe practices but develops a progressive and productive organization, as well as avoidance of major OSHA fines. Please contact us for the next available training date and location. Thank you in advance for considering not only the safety of your employees, but also for the gift of returning them home to their families safely.



Expect the Best

- ★ **Quality, high strength steel construction**
- ★ **A selection of time saving features**
- ★ **Competitively Priced**
- ★ **Stackable**
- ★ **Foam fill (optional)**

**AMERICAN
SHORING INC.**

1.800.407.4674
www.americanshoring.com

Z-Series Light Duty Trench Shoring

Z★Lite®

- ★ *Utility, plumbing, general maintenance and repair work*
- ★ *Use with small backhoe or mini excavator and provide the necessary safe working area for performance of these projects*
- ★ *3" narrow wall formed interior provides the best of both worlds*
- ★ *Lightweight like a single wall but without inside obstructions similar to a double wall*



Z-Lite® and Z-Box® incorporate designs found in our large trench boxes, but contain unique features found only on our Z-Box® Series.



Z-LITE®

APPROXIMATE DIGGING DEPTH
(FT.) & SOIL TYPE

MODEL	HEIGHT	LENGTH	WEIGHT	PSF	APPROXIMATE DIGGING DEPTH (FT.) & SOIL TYPE			
					A	B	C	C
3ZL66	6'	6'	1000#	829	37	22	18	14
3ZL68	6'	8'	1400#	790	33	20	16	12
3ZL610	6'	10'	1800#	563	26	18	14	10
3ZL86	8'	6'	1700#	1140	48	27	20	15
3ZL88	8'	8'	1900#	1140	48	27	20	15
3ZL810	8'	10'	2400#	730	33	20	16	12

Other sizes available on request





Z-Box®



- ★ 3" walls from 4' to 10' long
- ★ 4" walls from 12' to 16' long
- ★ Factory painted
- ★ Long collar adjustable widths optional
- ★ Stacking Kit optional



6" WALL Z-BOX INSIDE



6" WALL Z-BOX WITH FRONT CUTTING EDGE

MODEL	HEIGHT	LENGTH	WEIGHT	PSF	APPROXIMATE DIGGING DEPTH (FT.) & SOIL TYPE			
					A	B	C	C
					25	45	60	80
3Z66	6'	6'	1800#	1125	45	25	23	18
3Z68	6'	8'	2400#	844	34	19	17	13
3Z610	6'	10'	2700#	675	27	15	14	11
3Z612	6'	12'	3250#	563	23	13	11	8
3Z86	8'	6'	2350#	1125	45	25	23	17
3Z88	8'	8'	3000#	844	34	19	17	13
3Z810	8'	10'	3500#	675	27	15	14	11
3Z812	8'	12'	4200#	563	23	13	12	9
3Z108	10'	8'	3750#	850	34	20	18	14
3Z1010	10'	10'	4400#	700	28	16	15	12

Other sizes available on request

MODEL	HEIGHT	LENGTH	WEIGHT	PSF	MODEL 4Z Greater Lengths, Depths			
					A	B	C	C
					25	45	60	80
4Z612	6'	12'	3600#	563	23	13	12	9
4Z812	8'	12'	4640#	889	36	20	18	14
4Z814	8'	14'	5400#	762	30	17	15	11
4Z816	8'	16'	6200#	675	27	15	14	10

Other sizes and wall thickness available on request.
Also available are the 6Z and 8Z models.
Top extensions available.



CUSTOM Z-BOX WITH REMOVABLE TRAILING WING

AMERICAN SHORING INC.

1.800.407.4674
www.americanshoring.com

Light Weight Steel



**EXCELLENT FOR CONTRACTORS
USING LIGHTER EXCAVATORS OR FOR
MUNICIPAL APPLICATIONS HAVING
HEAVIER EQUIPMENT AVAILABLE.**

3" LIGHT WEIGHT SHIELDS

*Collars are available to accept a choice of
ULPS, LPS or MPS Spreaders*

MODEL	HEIGHT	LENGTH	WEIGHT	APPROXIMATE DIGGING DEPTH (FT.) & SOIL TYPE			
				A 25	B 45	C 60	C 80
3SSW46L	4'	6'	621#	48	27	21	16
3SSW48L	4'	8'	789#	36	21	16	13
3SSW410L	4'	10'	959#	23	14	11	9
3SSW412L	4'	12'	1270#	14	9	7	6
3SSW66L	6'	6'	878#	53	31	24	19
3SSW68L	6'	8'	1117#	34	20	16	13
3SSW610L	6'	10'	1249#	22	13	11	9
3SSW612L	6'	12'	1707#	14	9	7	6
3SSW86L	8'	6'	1138#	49	29	23	18
3SSW88L	8'	8'	1446#	33	20	16	13
3SSW810L	8'	10'	1755#	22	14	11	10
3SSW812L	8'	12'	2205#	14	10	8	7

3" STEEL SINGLE WALL SHIELDS

*Collars are available to accept a choice of
ULPS, LPS or MPS Spreaders*

MODEL	HEIGHT	LENGTH	WEIGHT	APPROXIMATE DIGGING DEPTH (FT.) & SOIL TYPE			
				A 25	B 45	C 60	C 80
3SSW46	4'	6'	967#	94	54	42	32
3SSW48	4'	8'	1153#	47	21	22	17
3SSW410	4'	10'	1341#	27	17	14	11
3SSW412	4'	12'	1528#	18	12	10	8
3SSW66	6'	6'	1272#	76	44	34	27
3SSW68	6'	8'	1528#	42	25	20	16
3SSW610	6'	10'	1784#	27	17	14	11
3SSW612	6'	12'	2041#	18	12	10	8
3SSW86	8'	6'	1618#	42	25	20	16
3SSW88	8'	8'	1943#	32	20	16	13
3SSW810	8'	10'	2269#	27	17	14	11
3SSW812	8'	12'	2594#	20	13	11	9

3" STEEL DOUBLE WALL SHIELDS

*Collars are available to accept a choice of
ULPS, LPS or MPS Spreaders*

MODEL	HEIGHT	LENGTH	WEIGHT	APPROXIMATE DIGGING DEPTH (FT.) & SOIL TYPE			
				A 25	B 45	C 60	C 80
3SDW66	6'	6'	1475#	114	65	50	38
3SDW68	6'	8'	1966#	85	49	38	29
3SDW610	6'	10'	2284#	68	40	31	24
3SDW612	6'	12'	2648#	56	33	26	20
3SDW86	8'	6'	2100#	63	37	29	22
3SDW88	8'	8'	2436#	47	28	22	17
3SDW810	8'	10'	2927#	37	22	18	14
3SDW812	8'	12'	3403#	32	20	16	13



**For Safe, Secure, On-Time Delivery
Choose Maragliano Trucking!**

*** PSF Ratings and depths are based on short term exposure with excavation open a period of time equal to 24 hours or less. Consult manufacturer should long term exposure be required. Depths are based on A, B, C soil types are described in OSHA's 29 CFR Part 1926 Subpart P, October 31, 1989 with Type A not exceeding 25 PSF per foot of depth. Type B not exceeding 45 PSF per foot of depth. Type C-60 not exceeding 60 PSF per foot of depth and Type C-80 not exceeding 80 PSF per foot of depth. Determine actual soil pressures and consult Manufacturers Tabulated Data prior to each use.

Spreader Selection

SETS INCLUDE PINS AND KEEPERS

ULPS SPREADER SET SELECTION

Light pipe spreaders- 1/4" wall steel pipe
(4) 4" schedule 40 pipes

MODEL	WIDTH	WEIGHT
ULPS-4-24	24"	110#
ULPS-4-30	30"	135#
ULPS-4-36	36"	155#
ULPS-4-42	42"	175#
ULPS-4-48	48"	200#
ULPS-4-54	54"	225#
ULPS-4-60	60"	255#
ULPS-4-72	72"	290#
ULPS-4-84	84"	345#
ULPS-4-96	96"	395#
ULPS-4-120	120"	490#
ULPS-4-132	132"	795#
ULPS-4-144	144"	855#

LPS SPREADER SET SELECTION

Light pipe spreaders- 5/16" wall steel pipe
(4) 4" schedule 80 pipes

MODEL	WIDTH	WEIGHT
LPS-4-24	24"	150#
LPS-4-30	30"	185#
LPS-4-36	36"	210#
LPS-4-42	42"	240#
LPS-4-48	48"	270#
LPS-4-54	54"	300#
LPS-4-60	60"	330#
LPS-4-72	72"	390#
LPS-4-84	84"	450#
LPS-4-96	96"	480#
LPS-4-120	120"	540#

MPS SPREADER SET SELECTION

Medium pipe spreaders- 3/8" wall steel pipe
(4) 5" schedule 80 pipes

MODEL	WIDTH	WEIGHT
MPS-4-24	24"	230#
MPS-4-30	30"	275#
MPS-4-36	36"	320#
MPS-4-42	42"	360#
MPS-4-48	48"	400#
MPS-4-54	54"	440#
MPS-4-60	60"	480#
MPS-4-72	72"	650#
MPS-4-84	84"	750#
MPS-4-96	96"	850#
MPS-4-120	120"	1025#
MPS-4-132	132"	1150#
MPS-4-144	144"	1250#



SW MODEL SAME CONSTRUCTION AS THE "DW" LESS THE FULL INTERIOR PLATE



DW MODEL IS THE SAME AS THE "SW" EXCEPT WITH THE ADDITION OF A FULL INTERIOR PLATE

AMERICAN SHORING INC.

1.800.407.4674

www.americanshoring.com

Medium Duty Trench Shields



Same as the "SSW" Light Steel except with a full interior plate

- ★ Professional engineer certified
- ★ High strength steel construction
- ★ 4" wall thickness standard
- ★ 3" wall thickness available
- ★ Utilizes pinned in place pipe spreaders
- ★ Lifting lugs standard
- ★ Hardwood filled top & front rails
- ★ Reinforced bottom cutting edges and anti-wear bar standard
- ★ Stackable
- ★ Factory painted
- ★ Optional Styrofoam filled
- ★ Medium & Heavy Duty Series available

4" LIGHT WEIGHT STEEL SINGLE SIDE WALLS

MODEL	HEIGHT	LENGTH	WEIGHT	APPROXIMATE DIGGING DEPTH (FT.) & SOIL TYPE			
				A 25	B 45	C 60	C 80
4SSW46L	4'	6'	1525#	93	53	41	32
4SSW48L	4'	8'	1800#	89	51	39	31
4SSW410L	4'	10'	2150#	64	37	29	23
4SSW412L	4'	12'	2450#	45	27	21	17
4SSW416L	4'	16'	3050#	31	19	15	12
4SSW66L	6'	6'	2075#	93	53	41	32
4SSW68L	6'	8'	2450#	89	51	39	31
4SSW610L	6'	10'	2900#	57	33	26	21
4SSW612L	6'	12'	3475#	47	28	22	18
4SSW616L	6'	16'	4550#	31	19	15	12
4SSW86L	8'	6'	2550#	93	53	41	32
4SSW88L	8'	8'	2950#	64	37	29	23
4SSW810L	8'	10'	3550#	50	30	23	18
4SSW812L	8'	12'	4150#	38	23	18	15
4SSW816L	8'	16'	5400#	31	19	15	12
4SSW820L	8'	20'	6550#	24	15	12	10

4" LIGHT WEIGHT STEEL DOUBLE SIDE WALLS

MODEL	HEIGHT	LENGTH	WEIGHT	APPROXIMATE DIGGING DEPTH (FT.) & SOIL TYPE			
				A 25	B 45	C 60	C 80
4SDW412L	4'	12'	2760#	69	39	30	23
4SDW414L	4'	14'	3071#	49	28	22	17
4SDW416L	4'	16'	3383#	37	22	17	13
4SDW612L	6'	12'	3614#	64	37	29	22
4SDW614L	6'	14'	4057#	50	29	23	18
4SDW616L	6'	16'	4500#	38	23	18	14
4SDW812L	8'	12'	4469#	63	37	29	23
4SDW814L	8'	14'	5042#	51	30	24	19
4SDW816L	8'	16'	5616#	39	24	19	15

Other sizes available on request

Spreader Selection

SETS INCLUDE PINS AND KEEPERS



4" MEDIUM DUTY STEEL DOUBLE SIDE WALLS

MODEL	HEIGHT	LENGTH	WEIGHT	APPROXIMATE DIGGING DEPTH (FT.) & SOIL TYPE			
				A 25	B 45	C 60	C 80
4SDW48	4'	8'	2525#	96	53	40	30
4SDW410	4'	10'	2850#	90	49	37	28
4SDW412	4'	12'	3385#	82	47	36	28
4SDW416	4'	16'	4377#	63	37	29	22
4SDW420	4'	20'	5209#	38	23	18	15
4SDW424	4'	24'	6044#	20	13	11	9
4SDW522	5'	22'	6630#	24	15	12	10
4SDW68	6'	8'	3550#	85	48	36	29
4SDW610	6'	10'	4150#	80	45	33	27
4SDW612	6'	12'	4920#	78	45	32	25
4SDW616	6'	16'	5600#	66	38	30	23
4SDW620	6'	20'	6706#	40	24	19	15
4SDW624	6'	24'	7826#	24	15	12	10
4SDW88	8'	8'	4400#	96	55	42	33
4SDW810	8'	10'	5100#	88	51	39	30
4SDW812	8'	12'	5721#	83	48	37	29
4SDW814	8'	14'	6480#	71	41	32	25
4SDW816	8'	16'	7178#	64	37	29	23
4SDW820	8'	20'	8635#	42	25	20	16
4SDW824	8'	24'	9665#	26	16	13	11
4SDW1010	10'	10'	6100#	88	51	39	30
4SDW1012	10'	12'	7151#	83	48	37	29
4SDW1016	10'	16'	8760#	72	42	32	25
4SDW1020	10'	20'	10623#	44	26	21	17
4SDW1024	10'	24'	12763#	28	17	14	12

Other sizes available on request

LPS SPREADER SET SELECTION

Light pipe spreaders- 5/16" wall steel pipe
(4) 4" schedule 40 pipes

MODEL	WIDTH	WEIGHT
LPS-4-24	24"	150#
LPS-4-30	30"	185#
LPS-4-36	36"	210#
LPS-4-42	42"	240#
LPS-4-48	48"	270#
LPS-4-54	54"	300#
LPS-4-60	60"	330#
LPS-4-72	72"	390#
LPS-4-84	84"	450#
LPS-4-96	96"	480#
LPS-4-120	120"	540#

MPS SPREADER SET SELECTION

Medium pipe spreaders- 3/8" wall steel pipe
(4) 5" schedule 40 pipes

MODEL	WIDTH	WEIGHT
MPS-4-24	24"	230#
MPS-4-30	30"	275#
MPS-4-36	36"	320#
MPS-4-42	42"	360#
MPS-4-48	48"	400#
MPS-4-54	54"	440#
MPS-4-60	60"	480#
MPS-4-72	72"	650#
MPS-4-84	84"	750#
MPS-4-96	96"	850#
MPS-4-120	120"	1025#
MPS-4-132	132"	1150#
MPS-4-144	144"	1250#

4 PIPE SPREADER SYSTEM FOR STEEL SIDE WALLS

Standard configuration for 4', 6' & 8' high units
(taper optional)

MODEL	WIDTH	WEIGHT
HPS-4-24	24"	370#
HPS-4-30	30"	458#
HPS-4-36	36"	545#
HPS-4-42	42"	630#
HPS-4-48	48"	718#
HPS-4-54	54"	805#
HPS-4-60	60"	892#
HPS-4-72	72"	1065#
HPS-4-84	84"	1386#
HPS-4-96	96"	1559#
HPS-4-108	108"	1733#
HPS-4-120	120"	1907#

Other sizes and pipe schedules are used depending on conditions

AMERICAN SHORING INC.

1.800.407.4674
www.americanshoring.com

High Strength Trench Shields

High Strength Steel Trench Shields Available in 6" and 8" Single and Double wall



- ★ **Quality, high strength steel construction 6', 8', 10', 12' heights - lengths to 40'**
- ★ **Certified for deep cuts**
- ★ **Reinforced bottom cutting edges and anti-wear bar standard**
- ★ **Utilizes pinned in place pipe spreaders**
- ★ **Lifting lugs**
- ★ **Height adapter available**
- ★ **Optional full front cutting edges**
- ★ **Stackable**
- ★ **Foam fill (optional)**
- ★ **Professional Engineer Certified**

6" MEDIUM DUTY DOUBLE WALL APPROXIMATE DIGGING DEPTH (FT.) & SOIL TYPE

MODEL	HEIGHT	LENGTH	WEIGHT	APPROXIMATE DIGGING DEPTH (FT.) & SOIL TYPE			
				A	B	C	C
				25	45	60	80
6SDW412	4'	12'	3100#	102	71	54	42
6SDW416	4'	16'	4500#	90	50	38	29
6SDW420	4'	20'	5375#	55	32	24	19
6SDW424	4'	24'	6450#	38	22	17	13
6SDW426	4'	26'	6700#	34	20	16	12
6SDW612	6'	12'	4500#	92	60	48	40
6SDW616	6'	16'	5950#	86	49	37	29
6SDW620	6'	20'	7100#	54	31	24	18
6SDW624	6'	24'	8350#	38	23	18	15
6SDW626	6'	26'	9000#	33	18	14	11
6SDW812	8'	12'	6400#	84	42	35	28
6SDW816	8'	16'	7700#	69	40	30	24
6SDW820	8'	20'	9300#	57	32	24	19
6SDW824	8'	24'	10675#	37	22	18	14
6SDW826	8'	26'	11500#	32	19	14	9
6SDW1016	10'	16'	9150#	76	42	32	24
6SDW1020	10'	20'	11050#	57	33	26	20
6SDW1024	10'	24'	12990#	40	24	19	15
6SDW1026	10'	26'	13825#	32	21	14	11



8" MEDIUM DUTY DOUBLE WALL APPROXIMATE DIGGING DEPTH (FT.) & SOIL TYPE

MODEL	HEIGHT	LENGTH	WEIGHT	APPROXIMATE DIGGING DEPTH (FT.) & SOIL TYPE			
				A	B	C	C
				25	45	60	80
8SDW412	4'	12'	3250#	112	104	82	68
8SDW416	4'	16'	4875#	98	77	58	49
8SDW420	4'	20'	5875#	85	63	51	43
8SDW424	4'	24'	6875#	66	51	43	39
8SDW426	4'	26'	7350#	52	46	36	32
8SDW428	4'	28'	7850#	49	38	30	23
8SDW612	6'	12'	4650#	112	87	62	46
8SDW616	6'	16'	6850#	99	66	50	39
8SDW620	6'	20'	8275#	74	43	34	26
8SDW624	6'	24'	9675#	51	30	23	19
8SDW626	6'	26'	10500#	43	26	20	16
8SDW628	6'	28'	12300#	38	23	18	15
8SDW812	8'	12'	7200#	102	67	39	35
8SDW816	8'	16'	8750#	80	48	36	30
8SDW820	8'	20'	10575#	66	40	31	25
8SDW824	8'	24'	12375#	52	30	24	18
8SDW826	8'	26'	13400#	45	26	20	16
8SDW828	8'	28'	14300#	40	24	19	15
8SDW1016	10'	16'	10800#	97	60	46	35
8SDW1020	10'	20'	13100#	80	47	37	29
8SDW1024	10'	24'	15000#	56	34	27	22
8SDW1026	10'	26'	16500#	47	29	23	18
8SDW1028	10'	28'	17600#	42	26	21	16





36' LONG HEAVY DUTY TRENCH BOX WITH AVENGER STYLE END CLOSURE PLATES



SUPER Double Wall
SHOWN WITH FIVE (5) PIPE SPREADER SYSTEM



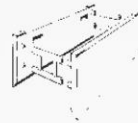
SUPER Double Wall
SHOWN WITH FOUR (4) PIPE SPREADER SYSTEM. "H" STYLE BRACKETS PERMIT STACKING AND LOCKING OF BOXES TOGETHER. STACKING TUBES ALSO AVAILABLE.

MODEL	HEIGHT	LENGTH	WEIGHT	APPROXIMATE DIGGING DEPTH (FT.) & SOIL TYPE			
				A	B	C	C
6SDW416H	4'	16'	5255#	99	70	53	41
6SDW420H	4'	20'	6319#	77	44	33	25
6SDW424H	4'	24'	7383#	53	31	23	18
6SDW616H	6'	16'	7133#	102	71	54	42
6SDW620H	6'	20'	8650#	79	45	34	26
6SDW624H	6'	24'	10168#	54	31	24	19
6SDW626H	6'	26'	10927#	46	27	21	16
6SDW628H	6'	28'	11634#	40	23	18	14
6SDW816H	8'	16'	9009#	93	54	41	32
6SDW820H	8'	20'	10981#	76	44	34	26
6SDW824H	8'	24'	12952#	55	32	25	20
6SDW826H	8'	26'	13938#	47	28	22	17
6SDW828H	8'	28'	14852#	41	24	19	15
6SDW1016H	10'	16'	10886#	86	50	39	30
6SDW1020H	10'	20'	13311#	70	41	32	25
6SDW1024H	10'	24'	15737#	55	33	26	21
6SDW1026H	10'	26'	16950#	48	29	23	18
6SDW1028H	10'	28'	18070#	41	25	20	16

MODEL	HEIGHT	LENGTH	WEIGHT	APPROXIMATE DIGGING DEPTH (FT.) & SOIL TYPE			
				A	B	C	C
8SDW416H	4'	16'	5830#	99	93	70	53
8SDW420H	4'	20'	6982#	99	58	44	34
8SDW424H	4'	24'	8132#	71	40	31	23
8SDW616H	6'	16'	7812#	99	96	73	55
8SDW620H	6'	20'	9437#	99	60	46	35
8SDW624H	6'	24'	11062#	74	43	32	25
8SDW626H	6'	26'	11874#	62	36	28	21
8SDW628H	6'	28'	12638#	54	31	24	19
8SDW816H	8'	16'	9794#	99	57	44	34
8SDW820H	8'	20'	11892#	80	46	36	28
8SDW824H	8'	24'	13990#	68	39	31	24
8SDW826H	8'	26'	15040#	63	37	28	22
8SDW828H	8'	28'	16022#	55	33	26	21
8SDW1016H	10'	16'	11775#	102	59	46	36
8SDW1020H	10'	20'	14348#	81	47	37	29
8SDW1024H	10'	24'	16920#	68	40	31	25
8SDW1026H	10'	26'	18206#	63	37	29	23
8SDW1028H	10'	28'	19404#	55	33	26	21

*** PSF Ratings and depths are based on short term exposure with excavation open a period of time equal to 24 hours or less. Consult manufacturer should long term exposure be required. Depths are based on A, B, C soil types as described in OSHA's 29 CFR Part 1926 Subpart P, October 31, 1989 with Type A not exceeding 25 PSF per foot of depth, Type B not exceeding 45 PSF per foot of depth, Type C-60 not exceeding 60 PSF per foot of depth and Type C-80 not exceeding 80 PSF per foot of depth. Determine actual soil pressures and consult Manufacturers Tabulated Data prior to each use.

Spreader Selection



4-PIPE SPREADER SYSTEM
STANDARD CONFIGURATION
FOR 4', 6' & 8' HIGH UNITS
(TAPER OPTIONAL)



5-PIPE SPREADER SYSTEM
STANDARD FOR 10' HIGH SIDEWALLS
OPTIONAL FOR 8' HIGH SIDEWALLS
(TAPER OPTIONAL)

HPS HEAVY PIPE SPREADERS

For deep cut sidewalls (taper optional) (4) 8" schedule 80 pipes

MODEL	WIDTH	WEIGHT
HPS-4-24	24"	500#
HPS-4-30	30"	600#
HPS-4-36	36"	700#
HPS-4-42	42"	775#
HPS-4-48	48"	850#
HPS-4-54	54"	950#
HPS-4-60	60"	1025#
HPS-4-72	72"	1200#
HPS-4-84	84"	1400#
HPS-4-96	96"	1550#
HPS-4-108	108"	1700#
HPS-4-120	120"	1900#

5 PIPE SPREADER SYSTEM

Standard for 10' high sidewalls optional for 8' high sidewalls (taper optional) (5) 8" schedule 80 pipes

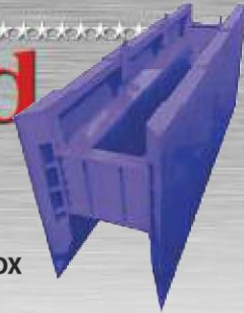
MODEL	WIDTH	WEIGHT
HPS-5-24	24"	465#
HPS-5-30	30"	572#
HPS-5-36	36"	680#
HPS-5-42	42"	790#
HPS-5-48	48"	900#
HPS-5-54	54"	1005#
HPS-5-60	60"	1115#
HPS-5-72	72"	1480#
HPS-5-84	84"	1670#
HPS-5-96	96"	1920#
HPS-5-108	108"	2130#
HPS-5-120	120"	2350#

AMERICAN SHORING INC.

1.800.407.4674
www.americanshoring.com

Heavy Duty Bolted

GLX Rigid Bolted Heavy Duty Trench Shield



GLX CLASS BOLTED BOX

- ★ *Constructed of high strength steel and high alloy steel*
- ★ *Wall thickness available in 6", 8" or 10"*
- ★ *Vertical front knife edges*
- ★ *Professional Engineer Certified*
- ★ *Extra long bottom knife*
- ★ *3/4" front and bottom anti-wear edges*
- ★ *Lift, push, or pull by direct bucket contact*
- ★ *Guides for rear cut off plate*
- ★ *Interchangeable widths*
- ★ *Choice of heights: 4', 6', 8', 10' or 12' high panels*
- ★ *Standard lengths to 40'*
- ★ *Impact distribution pads*
- ★ *Hardwood core*

MODEL	HEIGHT	LENGTH	WEIGHT	APPROXIMATE DIGGING DEPTH (FT.) & SOIL TYPE			
				A	B	C	C
6GLX417	4'	17'	5050#	84	48	37	29
6GLX419	4'	19'	5500#	56	33	26	20
6GLX421	4'	21'	6000#	52	31	24	19
6GLX425	4'	25'	7050#	43	26	20	16
6GLX427	4'	27'	7500#	35	21	17	14
6GLX617	6'	17'	7200#	84	48	37	29
6GLX619	6'	19'	7900#	56	33	26	20
6GLX621	6'	21'	8600#	52	31	24	19
6GLX625	6'	25'	10000#	43	26	20	16
6GLX627	6'	27'	10500#	35	21	17	14
6GLX817	8'	17'	8600#	72	42	32	25
6GLX819	8'	19'	9300#	56	33	26	20
6GLX821	8'	21'	10000#	52	31	24	19
6GLX825	8'	25'	12000#	43	26	20	16
6GLX827	8'	27'	12500#	35	21	17	14
6GLX1017	10'	17'	9800#	75	43	34	26
6GLX1019	10'	19'	11500#	62	36	28	22
6GLX1021	10'	21'	12000#	50	30	23	18



16' HIGH HEAVY DUTY BOLTED TRENCH BOX



BOX CULVERT INSTALLATION WITH 18' HIGH X 18' WIDE CLEARANCES



HEAVY DUTY BOLTED SPREADERS FEATURE "WINDOWS" FOR BETTER OPERATOR VIEWING. ADDITIONAL SPACERS CAN BE ADDED FOR WIDTH CHANGES



THE 8GLX1025 UNIT SHOWN
HERE IS 10' HIGH X 25' LONG



12 FT. HIGH AND 30 FT. LONG

8" WALL-8GLX TRENCH SHIELD

MODEL	HEIGHT	LENGTH	WEIGHT	APPROXIMATE DIGGING DEPTH (FT.) & SOIL TYPE			
				A	B	C	C
				25	45	60	80
8GLX417	4'	17'	5400#	88	51	39	30
8GLX419	4'	19'	5950#	72	42	32	25
8GLX421	4'	21'	6500#	68	40	31	24
8GLX425	4'	25'	7500#	52	31	24	19
8GLX427	4'	27'	8200#	43	26	20	16
8GLX617	6'	17'	7500#	112	64	49	38
8GLX619	6'	19'	8000#	90	52	40	31
8GLX621	6'	21'	8800#	72	42	32	25
8GLX625	6'	25'	10200#	52	31	24	19
8GLX627	6'	27'	10700#	44	26	21	17
8GLX817	8'	17'	9350#	79	46	35	27
8GLX819	8'	19'	10300#	64	37	29	23
8GLX821	8'	21'	11250#	56	33	26	20
8GLX825	8'	25'	13000#	48	28	22	18
8GLX827	8'	27'	14000#	43	26	20	16
8GLX1017	10'	17'	11500#	106	61	47	36
8GLX1019	10'	19'	12700#	88	51	39	30
8GLX1021	10'	21'	13900#	80	46	36	28
8GLX1025	10'	25'	16250#	48	28	22	18
8GLX1027	10'	27'	17500#	43	26	20	16



"BOX IN A BOX"
METHOD OF CONTAINMENT
CONTACT FACTORY
FOR DETAILS

HEAVY DUTY BOLTED BEAM STYLE

MODEL	WIDTH	WEIGHT
GLX24	24"	750
GLX30	30"	800
GLX36	36"F & 32"R	850
GLX42	42"F & 38"R	950
GLX48	48"F & 44"R	1050
GLX54	54"F & 50"R	1175
GLX60	60"F & 56"R	1300
GLX72	72"F & 68"R	1500
GLX84	84"F & 80"R	1900
GLX96	96"F & 92"R	2600
GLX108	108"F & 104"R	2800
GLX120	120"F & 116"R	3200



THE 10GLX1225 UNIT SHOWN
HERE IS 12' HIGH X 25' LONG AND
MADE OF HIGH ALLOY STEEL

10" WALL-10GLX TRENCH SHIELD

MODEL	HEIGHT	LENGTH	WEIGHT	APPROXIMATE DIGGING DEPTH (FT.) & SOIL TYPE			
				A	B	C	C
				25	45	60	80
10GLX621	6'	21'	11000#	88	51	39	30
10GLX625	6'	25'	12850#	60	35	27	22
10GLX627	6'	27'	13900#	48	28	22	18
10GLX629	6'	29'	14900#	43	26	20	16
10GLX631	6'	31'	15900#	36	22	17	14
10GLX821	8'	21'	14000#	88	51	39	30
10GLX825	8'	25'	16500#	60	35	27	22
10GLX827	8'	27'	17200#	48	28	22	18
10GLX829	8'	29'	18800#	44	26	21	17
10GLX831	8'	31'	20000#	40	24	19	15
10GLX835	8'	35'	22600#	31	19	15	12
10GLX1021	10'	21'	17200#	96	55	42	33
10GLX1025	10'	25'	20000#	68	40	31	24
10GLX1027	10'	27'	21500#	58	34	27	21
10GLX1029	10'	29'	22950#	50	30	23	18
10GLX1031	10'	31'	24400#	46	27	22	17
10GLX1035	10'	35'	27600#	37	22	18	14



TAPERED FRONT TO REAR. FACILITATES
DRAGGING FORWARD

**EXTRA HEAVY DUTY BOLTED
DRUM STYLE**

MODEL	WIDTH	WEIGHT
XGLX48	48"F & 44"R	1575
XGLX54	54"F & 50"R	1775
XGLX60	60"F & 56"R	2850
XGLX66	66"F & 62"R	3125
XGLX72	72"F & 68"R	3425
XGLX84	84"F & 80"R	4000
XGLX96	96"F & 92"R	4575
XGLX108	108"F & 104"R	5150
XGLX120	120"F & 116"R	5725
XGLX132	132"F & 128"R	6200
XGLX144	144"F & 140"R	6600
XGLX168	168"F & 164"R	7700
XGLX192	192"F & 188"R	8800

**AMERICAN
SHORING INC.**

1.800.407.4674
www.americanshoring.com

Steel Manhole Shields



Available in 4", 6" or 8" wall thickness

- ★ Professional certified engineer
- ★ High strength steel construction
- ★ 4", 6" or 8" wall thickness standard (other wall thicknesses available)
- ★ Choice of single wall or double wall construction
- ★ Utilizes pinned in pipe spreaders
- ★ Lifting lugs come standard
- ★ Hardwood filled top
- ★ Reinforced bottom cutting edges and anti-wear bar standard
- ★ Stackable
- ★ Also available in high strength aluminum alloy



4" SINGLE WALL MANHOLE WITH OPEN ENDS

MODEL	HEIGHT	LENGTH	PC	WEIGHT	APPROXIMATE DIGGING DEPTH (FT.) & SOIL TYPE			
					A	B	C	C
4SWOE88	8'	8'	48"	2800#	25	45	60	80
4SWOE810	8'	10'	48"	2900#	26	16	13	10
4SWOE812	8'	12'	48"	3400#	23	13	10	9

*PC = Pipe Clearance under spreaders is approximate depending on spreader set selection to be used.

4" DOUBLE WALL MANHOLE WITH OPEN ENDS

MODEL	HEIGHT	LENGTH	PC	WEIGHT	APPROXIMATE DIGGING DEPTH (FT.) & SOIL TYPE			
					A	B	C	C
4DWOE88	8'	8'	48"	3300#	71	39	30	25
4DWOE810	8'	10'	48"	4000#	68	38	28	24
4DWOE812	8'	12'	48"	4600#	61	34	26	22
4DWOE814	8'	14'	48"	5400#	57	32	24	20

*PC = Pipe Clearance under spreaders is approximate depending on spreader set selection to be used.

6" SINGLE WALL MANHOLE WITH OPEN ENDS

MODEL	HEIGHT	LENGTH	PC	WEIGHT	APPROXIMATE DIGGING DEPTH (FT.) & SOIL TYPE			
					A	B	C	C
6SWOE88	8'	8'	48"	4200#	48	26	20	16
6SWOE810	8'	10'	48"	4700#	38	21	16	14
6SWOE812	8'	12'	48"	5200#	28	16	12	10
6SWOE814	8'	14'	48"	5900#	23	13	10	8

*PC = Pipe Clearance under spreaders is approximate depending on spreader set selection to be used.

4" SINGLE WALL MANHOLE WITH WRAP AROUND ENDS

MODEL	HEIGHT	WIDTH	LENGTH	PC	WEIGHT	APPROXIMATE DIGGING DEPTH (FT.) & SOIL TYPE			
						A	B	C	C
4SWE88	8'	8'	8'	45"	4500#	38	21	16	13
4SWE810	8'	10'	10'	45"	5200#	28	18	14	12
4SWE812	8'	10'	12'	45"	6000#	28	16	12	10

*PC = Pipe Clearance under spreaders is approximate depending on spreader set selection to be used.

4" DOUBLE WALL MANHOLE WITH WRAP AROUND ENDS

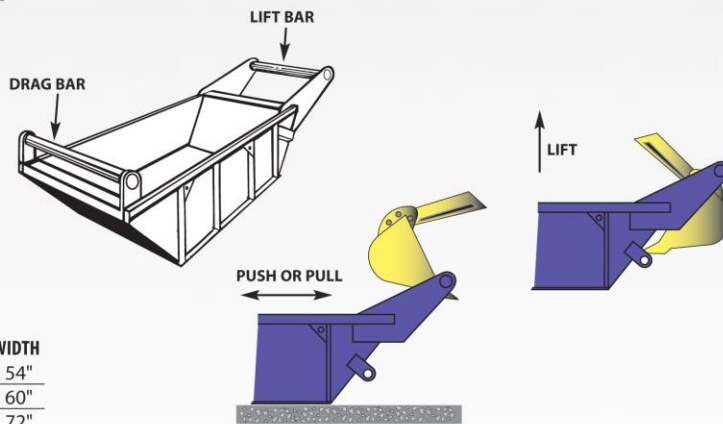
MODEL	HEIGHT	WIDTH	LENGTH	PC	WEIGHT	APPROXIMATE DIGGING DEPTH (FT.) & SOIL TYPE			
						A	B	C	C
4DWE88	8'	8'	8'	45"	4800#	81	45	34	23
4DWE810	8'	10'	10'	45"	6000#	72	40	30	21
4DWE812	8'	10'	12'	45"	7900#	62	35	26	18

*PC = Pipe Clearance under spreaders is approximate depending on spreader set selection to be used.

RockBox

**Available in Light,
Easy Lift, Standard
& Heavy Duty**

- ★ Keep bedding materials contained
- ★ Free up front loader for other functions
- ★ Easy transport
- ★ Help reduce the loss of pipe bedding materials
- ★ Quality construction
- ★ Lifting lugs standard
- ★ Handling bar
- ★ Inside wear bar
- ★ Smooth bottom



LIGHT DUTY ROCK BOXES

MODEL	CAPACITY	WEIGHT	HEIGHT	LENGTH	WIDTH
LRB4	4 CYD	3,289#	44"	13'	54"
LRB7	7 CYD	4,017#	44"	16'	60"
LRB9	9 CYD	4,143#	44"	16'	72"

INCLUDES LIFT BAR ONLY- DRAG BAR OPTIONAL

STANDARD DUTY ROCK BOXES

MODEL	CAPACITY	WEIGHT	HEIGHT	LENGTH	WIDTH
SRB5	5 CYD	4,162#	44"	13'	60"
SRB7	7 CYD	4,685#	44"	16'	60"
SRB9	9 CYD	5,220#	44"	16'	72"
SRB12	12 CYD	6,147#	44"	16'	96"
SRB15	15 CYD	7,500#	44"	20'	96"

INCLUDES LIFT BAR ONLY- DRAG BAR OPTIONAL

EASY LIFT ROCK BOXES

MODEL	CAPACITY	WEIGHT	HEIGHT	LENGTH	WIDTH
SRBP6	6 CYD	4,504#	48"	14'	60"
SRBP8	8 CYD	5,260#	48"	14'	72"
SRBP11	11 CYD	6,011#	48"	14'	96"

INCLUDES LIFT BAR AND DRAG BAR

HEAVY DUTY ROCK BOXES

MODEL	CAPACITY	WEIGHT	HEIGHT	LENGTH	WIDTH
HRB9	9 CYD	5,871#	44"	16'	72"
HRB12	12 CYD	7,168#	44"	16'	96"
HRB15	15 CYD	8,659#	44"	20'	96"

INCLUDES LIFT BAR AND DRAG BAR

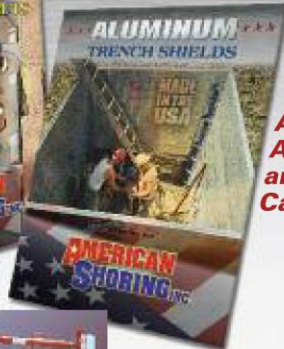
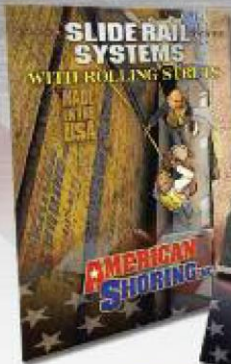


**AMERICAN
SHORING INC.**

1.800.407.4674
www.americanshoring.com

Made in the USA

From **Design**TM
to **Delivery**



Ask About Our
**Aluminum Trench Shield
and Slide Rail System
Catalogs!**



**American Shoring is the
Leader in High Quality,
Modular Trench Shoring**

American Shoring manufactures, sells and rents the world's most complete line of trench shoring equipment. From ultra light aluminum shoring, which may be handled by hand, to giant heavy duty trench boxes and slide rail sheeting replacement systems- no one has more product knowledge or ingenuity than the people at American Shoring.

Our staff is waiting for your call with professional advice to recommend the best specific product for your project.

Field service support and supervision available with on site assembly and take down.

All systems are manufactured in the USA.

Mighty Lite®
Aluminum
Systems



Triple Slide Rail



Mega Strut Slide Rail



Stackable Aluminum

Gas Tap Box
with
extended
sheeting



Remediation Slide Rail

**We Invite Comparisons!
When You Compare...We Win!**

- ★ SALES AND RENTALS ★
- ★ REPAIRS ★
- ★ RE-CERTIFICATION ★
- ★ TRADE-INS ★

**COMPETENT PERSON AND
O.S.H.A. TRAINING SEMINARS!**

© 2011 AMERICAN SHORING INC.
SPECIFICATIONS ARE SUBJECT TO CHANGE WITHOUT NOTICE. ALL ASI PRODUCTS ARE TO BE USED IN
CONFORMANCE WITH SAFE PRACTICES AND ALL FEDERAL STATE AND LOCAL LAWS. FOR ANY SUBJECT NOT
SPECIFICALLY COVERED IN THIS PUBLICATION, THE USER SHALL REFER TO O.S.H.A. REGULATIONS.

**AMERICAN
SHORING INC.**

1.800.407.4674

207 Lake Street, Newburgh, NY 12550

E-Mail us at

sales@americanshoring.com

Visit our website at

www.americanshoring.com

DISTRIBUTION

In New England

American Shoring of Massachusetts, Inc.

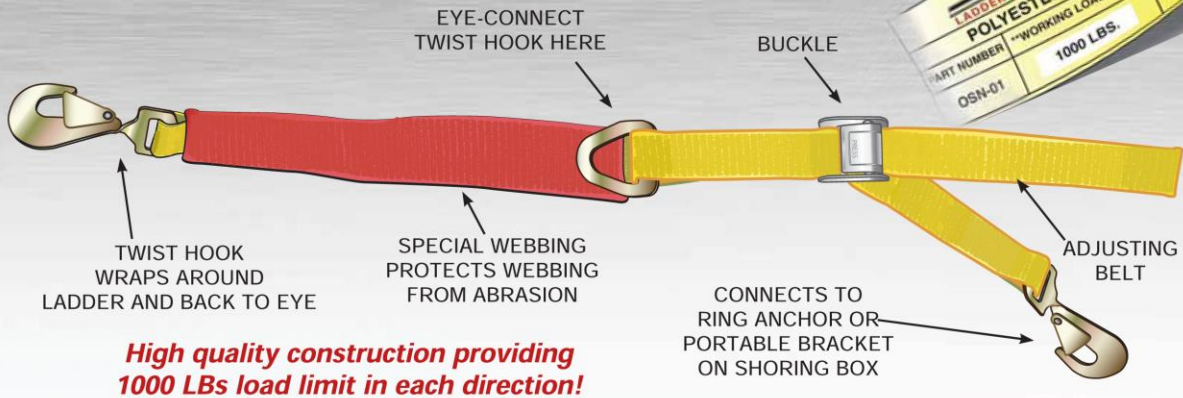
226 Cherry Street

Shrewsbury, Mass 01545

508-842-2822

Fax: 508-842-2824

The SLIP-NOT™ Advantage



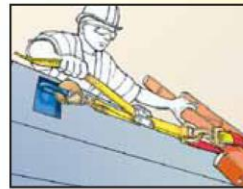
EASY INSTALLATION AND REMOVAL **IN MINUTES!**



1 FROM YELLOW WEBBING SIDE OF BRACE, ATTACH HOOK TO THE BRACKET RING.



2 LOOP THE RED WEBBING AND HOOK AROUND LADDER SIDE RAIL AND CLIP TWIST HOOK TO EYE RING.

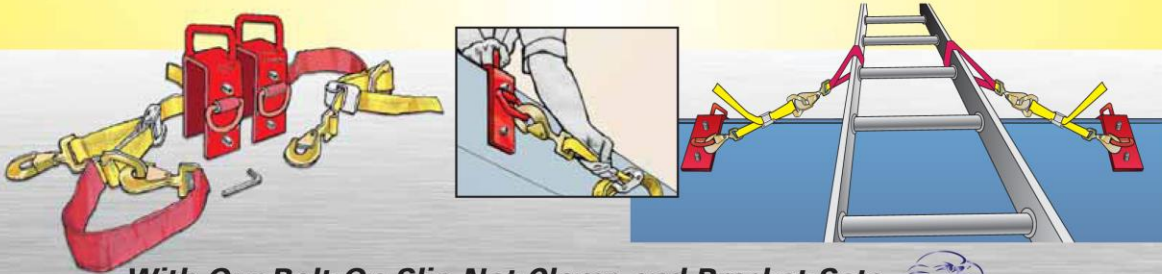


3 TIGHTEN BELT BY PULLING YELLOW ADJUSTING BELT



REPEAT STEPS 1 THRU 3 ON OTHER SIDE OF LADDER. LADDER IS NOW SECURE AND MAY BE USED SAFELY.

Make any box "Slip-Not" ready!



With Our Bolt-On Slip-Not Clamp and Bracket Sets

Comes complete with two adjustable ladder straps, two bolt on brackets with ring anchors, stainless steel set screws and allen wrench.

AMERICAN SHORING INC.
1.800.407.4674
www.americanshoring.com